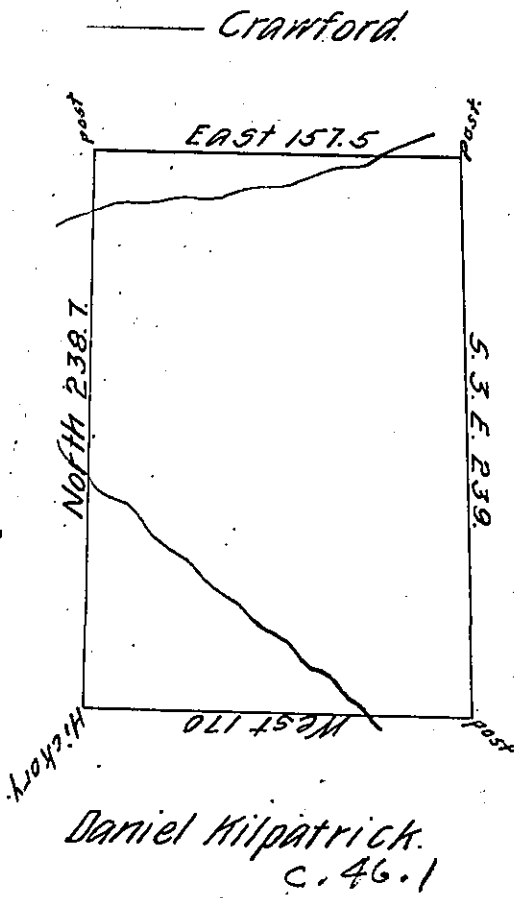


C-142-39  
R42-200  
Robert Millar Settler  
Jonathan Meredith Warrantee



THOMAS STINSON

C-151-298

The above is a draft of a tract of land surveyed June 30<sup>th</sup> 1810, in pursu-  
ance of a Warrant Granted to Joseph Hanna, dated June 7<sup>th</sup> 1810, situate in  
Big Beaver Township, Beaver County, adjoining land of Thomas Stinson, Dan-  
iel Kilpatrick and others. Containing 230 Acres & 64 perches and allowance  
of Six per Cent.

Jonathan Mendenhall, D.S.

Beaver, - Nov<sup>r</sup>. 16<sup>th</sup> 1810.

To Andrew Porter, Esq<sup>r</sup>  
Surveyor General.

IN TESTIMONY that the above is a copy of the original remaining on file in  
the Department of Internal Affairs of Pennsylvania, made  
conformably to an Act of Assembly approved the 16th day of  
February, 1833, I have hereunto set my Hand and caused  
the Seal of said Department to be affixed at Harrisburg,  
this sixth day of April 1905.

*Isaac N. Brown*  
Secretary of Internal Affairs.